

2018

履修要項 シラバス

Program Guide & Syllabus

JEP Kyoto-E

Japanese Experience Program in Kyoto

You,
Unlimited



2018 ACADEMIC YEAR CALENDAR

	SUN	MON	TUES	WED	THURS	FRI	SAT	
APRIL	1	2	3	4	5	6	7	1 Academic Year Begins Entrance Ceremony (Fukakusa) 2-8 Registration Guidance Period
	8	9	10	11	12	13	14	9 Semester 1 Classes Begin
	15	16	17	18	19	20	21	
	22	23	24	25	26	27	28	
	29	30						28 Show Day (No Class) 30 Replacement National Holiday (Classes Held)
MAY			1	2	3	4	5	3 Constitution Memorial Day (No Class) 4 Greenery Day (No Class) 5 Children's Day (No Class)
	6	7	8	9	10	11	12	7-11 Class Cancellation Period
	13	14	15	16	17	18	19	15 Buddhist Memorial Service (Fukakusa) 16 Buddhist Memorial Service (Only)
	20	21	22	23	24	25	26	16 Celebration of Shintaro's Birth (No Class from 5th Period On)
	27	28	29	30	31			19-20 Celebration of Shintaro's Birth (10: Classes held) 21 Establishment Memorial
JUNE						1	2	2 From 5th Period (Wednesday, 5th Class)
	3	4	5	6	7	8	9	
	10	11	12	13	14	15	16	15 Buddhist Memorial Service (Fukakusa)
	17	18	19	20	21	22	23	
	24	25	26	27	28	29	30	
JULY	1	2	3	4	5	6	7	
	8	9	10	11	12	13	14	
	15	16	17	18	19	20	21	15 Marine Day (Classes Held) 16 Buddhist Memorial Service (Only)
	22	23	24	25	26	27	28	24-25 Supplementary Day for Intensive Study 28 Final Day of Semester 1 Classes
	29	30	31					30-8/5 Semester 1 Final Exam Period
AUGUST				1	2	3	4	
	5	6	7	8	9	10		5-6 Supplementary Day for Final Exams 7-9/8 Summer Break 7-10 Supplementary Class Period
								11 Mountain Day (No Class) 11-18 All University Offices Closed
	19	20	21	22	23	24	25	20-21 Supplementary Class Period 22-24 Additional Exam
	26	27	28	29	30	31		27-9/1 Summer Session ①
SEPTEMBER							1	
	2	3	4	5	6	7	8	3-8 Summer Session ②
	9	10	11	12	13	14	15	10 Semester 2 Begins 10-19 Registration Guidance Period
	16	17	18	19	20	21	22	17 Respect for the Aged Day (No Class) 19 September Graduation Ceremony + Entrance Ceremony 20 Semester 2 Classes Begin
	23	24	25	26	27	28	29	23 Autumnal Equinox Day 24 Replacement National Holiday (Classes Held)

	SUN	MON	TUES	WED	THURS	FRI	SAT	
OCTOBER		1	2	3	4	5	6	
	7	8	9	10	11	12	13	8 Health-Sports Day (Classes Held)
	14	15	16	17	18	19	20	15-19 Class Cancellation Period 15 Buddhist Memorial Service (Fukakusa) 16 Buddhist Memorial Service (Only) 18 (Moon) Buddhist Lecture Meeting (No Class)
	21	22	23	24	25	26	27	27-28 Ryukoku Festival (Setsu) (27 No Class)
	28	29	30	31				
NOVEMBER					1	2	3	2-4 Ryukoku Festival (Fukakusa) (2 No Class) 3 Culture Day (No Class)
	4	5	6	7	8	9	10	
	11	12	13	14	15	16	17	15 Buddhist Memorial Service (Fukakusa) 16 Buddhist Memorial Service (Only)
	18	19	20	21	22	23	24	23 Labor Thanksgiving Day (Classes Held)
	25	26	27	28	29	30		
DECEMBER							1	
	2	3	4	5	6	7	8	
	9	10	11	12	13	14	15	
	16	17	18	19	20	21	22	23 Emperor's Birthday (No Class) 24 Replacement National Holiday (No Class) 26 Supplementary Day for Intensive Study 27-1/5 Winter Break 28-1/5 All University Offices Closed
	23	24	25	26	27	28		
JANUARY								1 New Years Day
	6	7	8	9	10	11	12	7 Classes Resume
	13	14	15	16	17	18	19	14 Coming of Age Day (No Class) 15 Buddhist Memorial Service (Fukakusa) 16 Buddhist Memorial Service (Only)
	20	21	22	23	24	25	26	21 Final Day of Semester 2 Classes 22 Supplementary Day for Intensive Study 23-24, 2/2 Semester 2 Final Exam Period
	27	28	29	30	31			
FEBRUARY						1	2	2 Additional Exam Period
	3	4	5	6	7	8	9	4-9 Supplementary Class Period 4-3/31 Spring Break
	10	11	12	13	14	15	16	11 National Foundation Day (No Class) 14-15, 18 Additional Exam Period
	17	18	19	20	21	22	23	
	24	25	26	27	28			
MARCH						1	2	
	3	4	5	6	7	8	9	
	10	11	12	13	14	15	16	14 Graduation Ceremony (Fukakusa)
	17	18	19	20	21	22	23	21 Spring Equinox Day
	24	25	26	27	28	29	30	
	31							31 End of Academic Year

About the JEP-E Study Course

Curriculum

JEP-E Curriculum is on Page8.

Conditions for Program Completion

A total of **32 JEP-E credits** are required for completion of the program. Exchange students who are present for one year and who earn **32 credits** upon successful completion of <JEP-E Curriculum> will be awarded a JEP Kyoto Completion Certificate.

About Class Registration

Please submit your Class Registration Form at the Center for the Promotion of Global Education (R-Globe) Office Counter.

【Class Registration Deadlines】

Semester 1 April 13th (Fri) 17:00

Semester 2 September 26th (Wed) 17:00

Cautions Regarding Class Registration

- (1) Class registration takes place each semester. Registration of 16 credits (or more) is required in **each semester**.
- (2) Students who belong to **JEP -E** may register for JEP-E subjects, Japan-Related Liberal Arts Subjects, Special Lectures, and Faculty and Graduate School subjects (offered in English) for a **required total of 16 credits or above per semester**.
- (3) For those who have selected JEP-E, the following JEP-E courses are compulsory. Please be sure to register for them. Those marked with a **【●】** are named as **【A・B】** or **【I・II】** according to Spring・Fall. The content is different for the courses, depending on the semester, so please be sure to register for these courses in each semester. Those marked with **【◆】** have the same content in both semesters, so they not be registered for twice.

Core Subjects (Compulsory Subjects)

【First Semester, 2018 (Spring)】

- Introductory Seminar A
- Introductory Japanese I (New Students)
- Introductory Japanese II (Continuing Students)
- Buddhist Thought A
- Kyoto Studies A
- ◆ Exploring Business in Kyoto (Not Offered)
- ◆ Understanding and Creating Financial Reports
- ◆ Fieldwork in Ryukoku Museum

【Second Semester, 2018 (Fall)】

- Introductory Seminar B
- Buddhist Thought B
- Introductory Japanese I (New Students)
- Introductory Japanese II (Continuing Students)
- Kyoto Studies B
- ◆ Exploring Business in Kyoto
- ◆ Understanding and Creating Financial Reports (Not Offered)
- ◆ Fieldwork in Ryukoku Museum

(3) The following 【Japan-Related Liberal Arts Subjects】 and 【Special Lectures】 are Elective Courses and are taught in English, so please choose from them freely.

Elective Courses
【First Semester, 2018 (Spring) 】
Japanese Religions A
Japanese Literature & Movies
Japanese History
Japanese Economy & Management
Japanese Law & Politics
【Second Semester, 2018 (Fall) 】
Japanese Religions B

Japanese Media & Arts
 Japanese Society (E)
 Japanese Technology
 Japanese Pop Culture
 Special Lecture 1B (Japan's Diplomacy in the context
 of Globalization)

Registration for Regular Faculty • Graduate School Subjects

- (1) Students in JEP-E may not register for Faculty/Graduate School subjects taught in Japanese. However, they may choose from a specific list of Faculty/Graduate School subjects taught in English (to be passed out separately).
- (2) Please note that credit awarded for Faculty/Graduate School subjects does not count as credit toward the JEP Kyoto Completion Certificate.
- (3) If you would like to take Faculty/Graduate School subjects, it is necessary to submit a **“Registration Consultation Sheet for Faculty and Graduate School Subjects 「履修登録事前相談シート」**” to the Center for the Promotion of Global Education (R-Globe) Office, and confirm ahead of time whether or not registration for that class is possible. Therefore, please be sure to turn in your Class Registration Sheet AFTER submitting the **“Registration Consultation Sheet for Faculty of Graduate School Subjects 「履修登録事前相談シート」**” on one or more of the following dates and confirming your ability to register.
- (4) **IMPORTANT!** Even if you have turned in your “Registration Consultation Sheet for Faculty and Graduate School Subjects 「履修登録事前相談シート」” and received a positive reply, **the submitting of this form does NOT mean that you have registered for the subject.**

- ① <1st Deadline> Submission of the Registration Consultation Sheet
 September 20th (Thurs) 2:00PM Results will be posted afterwards.
- ② <2nd Deadline> Submission of the Registration Consultation Sheet
 September 24th (Mon) 14:00 Results will be posted afterwards.

③ Formal Class Registration Deadline

September 26th (Wed) 17:00

(Faculty/Graduate School classes may only be registered for if a class is deemed as “Possible” after the consultation 1st Deadline or 2nd Deadline. Furthermore, ③ is the only stage in which classes may be **actually** registered for.)

Cancellation of Registered Classes

It is possible to cancel a registered class if you feel the need to do so. For this purpose, it is necessary to submit a Class Cancellation Sheet 「履修辞退届」^{りしゅうじたいとどけ} at the Center for the Promotion of Global Education (R-Globe) Office, within the designated time period. However, please note that **Compulsory Subjects cannot be cancelled.**

Class Cancellation Periods 「履修辞退期間」^{りしゅうじたいきかん}

Semester 1 May 7th (Mon) 9:00～ May 11th (Fri) 17:00

Semester 2 October 15th (Mon) 9:00～October 19th (Fri) 17:00

About Classes

The class schedule is as follows:

1 st Period	2 nd Period	3 rd Period	4 th Period	5 th Period
9:00～10:30	10:45～12:15	13:15～14:45	15:00～16:30	16:45～18:15

※ Please confirm the classroom and Instructor of each class on the separate class timetable 「^{じかんわりひょう}時間割表」.

※ Please be aware that exams may be conducted at times outside regular class hours.

Regarding Class Absences

Students who have missed **1/3 or more** of a registered class will forfeit their right to take the final exam in that class, and in some cases credit may not be awarded.

- (1) If you plan to be absent from class for an extended period (due to illness, the need to return to your home country, etc.), you must submit an absence form 「^{けっせきとどけ}欠席届」 to the Center for the Promotion of Global Education (R-Globe) Office. If your extended absence is due to a medical issue, etc. please attach a doctor's note or other certificate.

- (2) If you plan to be absent from class for a short period, please be in sure to get in touch with the Class Coordinator either before or just after your absence to explain the reason.

Exams and Criteria for Evaluation

Evaluation is entrusted to each instructor's judgement with regards to end-of-semester exams, in-class tests, homework assignments, reports, in-class participation, etc.. Specific details are included in the syllabus for each class.

- (1) Evaluation is based on a total of 100 points. Pass=60 points and above; Fail=59 points and below
- (2) Students who have been absent for 1/3 or more of the class forfeit their right to take the final exam.
- (3) Transcripts will reflect the passing scores of students according to the grade system below. Transcripts will not include the scores of classes for which a passing grade was not received.
- (4) The grading system is as follows:

S	A	B	C
100~90pts	89~80pts	79~70pts	69~60pts

Caution: Cheating on Exams and in Reports

- (1) In the case of cheating during an exam, credit will not be awarded for any subjects registered for in that semester. According to the level of cheating, additional disciplinary action may be taken according to university regulations.
- (2) Replication of existing documents (for example, duplication of material found on the internet) in a student report (reports submitted as tests, as well as reports submitted as class assignments) will render the submitted material as invalid, and in some cases credit will not be awarded. When referring to another individual's work, the passage must be cited and the source specified. Great care should be taken to avoid plagiarism.

Grade Appeals System

If you have a doubt about an assigned grade, please fill out the designated "Grade Appeal

Request Form「^{せいせきぎぎもうしでようし}成績疑義申出用紙」” and submit it to the Center for the Promotion of Global Education (R-Globe) Office. Direct inquiries to the class instructor are **not** permitted. Please note that the specific time period for grade appeal requests will be posted separately.

JEP Kyoto-E Curriculum 2018 [1st (Spring) Semester]

semester	Subject Type	Core Subject (Compulsory Subject) ※	Elective compulsory Subject	Subjects	Credits	Day & Period	Instructors	Instructor's Faculty / Title	Language
1st (Spring)	Seminars	●		Introductory Seminar A	2	Mon5	WHITE Sean	Business	English
							DEBNAR Milos	International Studies	English
	Founding Philosophy	●		Buddhist Thought A	2	Fri4	GRANBACH Lisa	Part-time Instructor	English
	Introductory Japanese Language	(New Students)		Introductory Japanese I	1	Tue1	SAKAMOTO Asako	Part-time Instructor	English
		(New Students)		Introductory Japanese I	1	Wed1	IIDA Yoko	Part-time Instructor	English
		(New Students)		Introductory Japanese I	1	Thu1	SAKAMOTO Asako	Part-time Instructor	English
		(Continuing Students)		Introductory Japanese II	1	Tue2	SAKAMOTO Asako	Part-time Instructor	English
		(Continuing Students)		Introductory Japanese II	1	Wed2	SAKAMOTO Asako	Part-time Instructor	English
		(Continuing Students)		Introductory Japanese II	1	Thu2	SAKAMOTO Asako	Part-time Instructor	English
	Subjects coordinated by R-Globe	—		Exploring Business in Kyoto	2		Not Offered		English
		(New Students)		Understanding and Creating Financial Reports	2	Mon4	KISHITA Tetsuhiro	Business	English
		(New Students)		Fieldwork in Ryukoku Museum	2	Fri 2	KAMEYAMA Takahiko	Part-time Instructor	English
	Regional Cultural Studies	●		Kyoto Studies A	2	Wed3	CARTY Paul	Letters	English
	Japanese Society & Culture Subjects		○	Japanese Religions A	2	Fri 4	KAMEYAMA Takahiko	Part-time Instructor	English
			○	Japanese Literature & Movies	2	Tue4	ANTONONOKA Olga	Part-time Instructor	English
			○	Japanese History	2	Tue4	HIRAMATSU Hideki	Part-time Instructor	English
			○	Japanese Economy & Management	2	Mon4	IKEDA Maria	Part-time Instructor	English
			○	Japanese Law & Politics	2	Mon3	PARK Shinya	Part-time Instructor	English

JEP Kyoto-E Curriculum 2018 [2nd (Fall) Semester]

semester	Subject Type	Core Subject (Compulsory Subject) ※	Elective compulsory Subject	Subjects	Credits	Day & Period	Instructors	Instructor's Faculty / Title	Language
2nd (Fall)	Seminars	●		Introductory Seminar B	2	Fri 3	CHAPPLE Julian MEBED Sharif	International Studies Law	English
	Founding Philosophy Subjects	●		Buddhist Thought B	2	Fri4	GRANBACH Lisa	Part-time Instructor	English
	Introductory Japanese Language	●		Introductory Japanese I・II	1	Tue2	SAKAMOTO Asako	Part-time Instructor	English
		●		Introductory Japanese I・II	1	Wed2	SAKAMOTO Asako	Part-time Instructor	English
		●		Introductory Japanese I・II	1	Thu2	SAKAMOTO Asako	Part-time Instructor	English
	Subjects coordinated by R-Globe	(New Students)		Exploring Business in Kyoto	2	Mon 4	FUJIOKA Akiko HAYASHI Naoki AKIBA Hutoshi	Business	English
		—		Understanding and Creating Financial Reports	2		Not Offered		English
		(New Students)		Fieldwork in Ryukoku Museum	2	Fri 2	KAMEYAMA Takahiko	Part-time Instructor	English
	Regional Cultural Studies	●		Kyoto Studies B	2	wed 3	CARTY Paul	Letters	English
	Japanese Society & Culture Subjects		○	Japanese Religions B	2	Fri 4	KAMEYAMA Takahiko	Part-time Instructor	English
			○	Japanese Media & Arts	2	Mon3	SUGIMOTO Jessica	International Studies	English
			○	Japanese Society (E)	2	Tue 4	DEBNAR Milos	International Studies	English
			○	Japanese Technology	2	Fri 4	KIMURA Mutsumi NISHIHARA Michinori, HAMADA Hiroki, YAMAMOTO Yoshitaka	Science and Technology Part-time Instructor	English
			○	Japanese Pop Culture	2	Tue 4	FURMANOVSKY Michael	International Studies	English
	Special Lecture		○	Special Lecture 1B (Japan's Diplomacy in the context of Globalization)	2	Thu 3	WATANABE Kazuo	Visiting Professor	English

※ You must register for all Core Subjects. These are Compulsory!

Syllabus

(Class Outline & Content)

Introductory Seminar A・B	p.10
Buddhist Thought A・B	p.14
Introductory Japanese I	p.18
Introductory Japanese II	p.19
Exploring Business in Kyoto	p.20
Understanding and Creating Financial Reports	p.21
Fieldwork in Ryukoku Museum	p.22
Kyoto Studies A・B	p.24
Japanese Religions A・B	p.26
Japanese Media & Arts	p.28
Japanese Society	p.29
Japanese Technology	p.30
Japanese Pop Culture	p.31
Special Lecture 1B (Japan's Diplomacy in the context of Globalization)	p.32
Japanese Literature & Movies	p.33
Japanese History	p.34
Japanese Economy & Management	p.35
Japanese Law & Politics	p.36

授業科目名【Class Title】	単位 【Credits】	担当者【Class Instructor】	
Introductory Seminar A	2	Sean WHITE Miloš DEBNÁR	
サブテーマ【Sub Theme】		開講期 【Semester】	曜講時 【Day & Period】
Movement of peoples and its effects in Japan: Globalization, tourism and migration		Spring	Monday, 5 th
到達目標【Attainment objectives】			
<p>*Students should understand current and past flows of people to and from Japan in terms of scope, features, causes and effects.</p> <p>*Students should understand the role of education in facilitating the movement of people to and from Japan.</p> <p>*Students should understand the potential benefits as well as problems associated with the sudden increase of the foreign tourists in Japan and particularly in Kyoto. Through readings and fieldwork, students should be able to analyze the potential problems that arise during various interactions between foreign tourists and local residents.</p> <p>*Students should understand important Japanese international migration and related issues.</p>			
講義概要【Lecture Outline】			
<p>This class will examine the international movement of people and its effects in Japan in terms of tourism and human migration.</p> <p>After the class introduction in Week 1, Week 2 through Week 4 (White) will focus on how the education system in Japan has been affected by globalization and the role it continues to play in promoting the flow of people to and from the country. There will be a combination of readings, short lectures and discussions, to be followed by student reading presentations in Week 5.</p> <p>In the Week 6 through Week 11 (Debnár), we will focus on the issue of increasing foreign tourism in Japan and particularly in Kyoto. After a general introduction, we will address particular issues related to this phenomenon in the city of Kyoto and discuss its potential social and economic benefits as well as problems. Besides class meetings, we will visit a local Shoyu factory and collaborate with them on the pamphlet in English for foreign tourists.</p> <p>Finally, Week 12 through Week 14 (White) will further examine issues related to migration in Japan from both historical and contemporary perspectives through readings and film. Topics will include government policy, ethnic minorities, social issues and changing cultural identity.</p> <p>Week 1: Introduction</p> <p>Week 2-4: Globalization and education in Japan</p> <p>Week 5: Reading presentations and discussion</p> <p>Week 6: Inbound tourism in Japan</p> <p>Week 7-10: Project: fieldworks, reading assignments discussion</p> <p>Week 11: Presentation and summary</p> <p>Week 12-14: International migration and Japan</p> <p>Week 15: Summary and conclusion</p>			
講義方法【Lecture Method】			
<p>This class follows a seminar format, with weekly readings and discussion, field- and project work, written assignments and presentations. A high degree of participation is required.</p>			

授業時間外における予・復習等の指示【Direction related to study out of class】
Weekly reading and all other assignments, both required and supplemental, will be explained in class.
試験方法・成績評価方法【Testing and Grading Method】
Class participation, reading assignments: 50% Short papers and presentations: 50%
テキスト（書名・著者名・出版社名・価格）【Textbook(s) (Title・Author・Publisher・Price)】
Readings will be based on class handouts (details TBA).
参考文献【Recommended Literature】
受講上の注意・担当者からのひとこと【Important Considerations/Notes from Instructor】
Attendance is required for this class. Students should miss no more than three (3) classes for any reason. Please discuss all absences, planned or unintentional, with the instructors.

授業科目名【Class Title】	単位 【Credits】	担当者【Class Instructor】	
Introductory SeminarB	2	Julian CHAPPLE Sharif MEBED	
サブテーマ【Sub Theme】	開講期 【Semester】	曜講時 【Day & Period】	
Issues in Japanese Society & Culture	2nd (Fall)	Friday Period 3	
到達目標【Attainment objectives】			
At the completion of this class students will have increased their understanding of some of the major issues facing Japan today from both a social-science and modern-literary point of view.			
講義概要【Lecture Outline】			
The aim of this course is to provide an overview of some of the current important social issues in Japan and to understand concepts of cross-cultural social awareness. It is expected that students will develop a nuanced understanding of contemporary Japanese society through critically examining social problems from various perspectives. The class will be divided into two parts. The first half will examine a different social issue each week. The second half will examine Japanese society through the lens of modern literature.			
Class 1 Course orientation and introduction			
Part One:			
Class 2 Overview – How to study Japan & Issues in Japanese Society Today			
Class 3 Japanese Society Today (Continued) (Women, disabled, youth, minorities, etc.)			
Class 4 Population decline and the aging society			
Class 5 Economic Issues			
Class 6 Education today and tomorrow			
Class 7 Tourism and the regions			
Class 8 Presentations and discussions			
Part Two:			
Class 9 Introduction to traditional arts and aesthetics: Read Akutagawa Ryunosuke's "Hell Screen"			
Class 10 Read and Discuss Kawabata Yasunari's "Izu no Odoriko" ("The Dancing Girl of Izu")			
Class 11 Class and Gender in "Izu no Odoriko"			
Class 12 Recent View on Human Relations: Yoko Ogawa's "The Housekeeper and the Professor"			
Class 13 Culture of <i>care</i> : "The Housekeeper and the Professor"			
Class 14 Continue discussion of literature and society			
Class 15 Present your paper			
講義方法【Lecture Method】			
Classes will take the form of short lectures, discussions and presentations about the topics. Classes will be student-oriented and students are expected to actively participate in discussions.			
授業時間外における予・復習等の指示【Direction related to study out of class】			
Students are expected to read assigned articles and keep up to date with current events or the news in order to actively participate in discussions, give presentations and complete homework and/or exercises.			
試験方法・成績評価方法【Testing and Grading Method】			
The grading method will be explained in detail in the first class but will generally be based on class participation & summary papers, presentations, and/or individual research papers.			

テキスト（書名・著者名・出版社名・価格）【Textbook(s) (Title・Author・Publisher・Price)】	
Ogawa Yoko, The Housekeeper and the Professor, Vintage ¥1500	
参考文献【Recommended Literature】	
受講上の注意・担当者からのひとこと【Important Considerations/Notes from Instructor】	
All lectures are in English. Students are expected to give presentations and answer exercises and homework in English.	

授業科目名【Class Title】	単位【Credits】	担当者【Class Instructor】
Buddhist Thought A	2	Lisa Grumbach
サブテーマ【Sub Theme】	開講期【Semester】	曜講時【Day & Period】
Indian Buddhist Thought and History	1 st Semester	Fri 4
到達目標【Attainment objectives】		
<p>This course is a one-year survey of the major historical and doctrinal developments of the Buddhist tradition. The first semester focuses on the Indian beginnings of the religion, its teachings and practices, Indian Buddhist cosmology, the philosophy of the abhidharma, and the beginnings of the Mahayana and esoteric movements. The second semester turns to Buddhism in East Asia, examining how this religion was adopted in the region, and the development of new doctrines, practices, and schools in China, Korea and Japan. The latter part of the course will focus on the development of the Pure Land traditions and the teachings of Shinran as the founder of the Jodo Shinshu tradition in Japan. In addition to this substantive material, we will also consider methodologies used in Buddhist studies and religious studies.</p> <p>In this semester, students will obtain a grounding in the early history of the Buddhist tradition in India, including how the Buddha's thought differed from other religious trends of the time, and the development of primary Buddhist concepts and practices (karma, interdependence, meditation, enlightenment, etc.). The class will also introduce problems and disputes within the tradition, and consider the development of Mahayana and esoteric doctrines and practices.</p>		
講義概要【Lecture Outline】		
<p>Week 1 Introduction to the Study of Buddhism</p> <p>Week 2 The Buddha in History and Hagiography</p> <p>Week 3 The Buddhadharma: The Four Noble Truths, No-self, Dependent Arising, Karma</p> <p>Week 4 The Sangha: Monk, Nuns, and Lay People</p> <p>Week 5 Practice in Early Buddhism: Prayer, Devotion, Meditation</p> <p>Week 6 Buddhist Cosmology</p> <p>Week 7 Abhidharma: Buddhist Physics and Metaphysics</p> <p>Week 8 The Beginnings of the Mahāyāna</p> <p>Week 9 Mahāyāna Teachings and Philosophy: Emptiness (<i>śūnyatā</i>), "Mind-only" (<i>cittamātra</i>), and <i>tathāgata-garbha</i> (or buddha-nature)</p> <p>Week 10 Mahāyāna Soteriology: The "New" Buddha and the Bodhisattva Path</p> <p>Week 11 Mahāyāna Sutras: The <i>Lotus Sutra</i></p> <p>Week 12 The Spread of Buddhism into Central Asia</p> <p>Week 13 The Beginnings of Esoteric Buddhism (Vajrayana, Tantric Buddhism)</p> <p>Week 14 Understanding Esoteric Buddhist Imagery: Mandalas and Thankas</p> <p>Week 15 Epilogue: How the Indian Tradition Spread to East Asia</p>		
講義方法【Lecture Method】		
<p>Classroom lecture and discussion will be based on weekly reading materials. Each week students should select two sections or paragraphs of interest from the reading, in order to facilitate our in-class discussions (the selected passages should be typed and submitted to the instructor at the end of each class).</p>		
授業時間外における予・復習等の指示【Direction related to study out of class】		
<p>Students should read the weekly assignment before coming to class each week. Each student should select two sections or passages from the reading, type up and print the selections, and bring them to class to facilitate our discussion of the reading material.</p>		

Additionally, depending on student interest, will we arrange visits to Kyoto-area temples that help to illustrate concepts discussed in class (such as Toji Temple as an example of Esoteric Buddhism). These visits will be optional and arranged outside of regular class time.

試験方法・成績評価方法【Testing and Grading Method】

70% class discussion (includes the two selected passages from the reading)

30% three short research notes (1-2 pages), each on a single term, concept, or development within Buddhism

テキスト（書名・著者名・出版社名・価格）【Textbook(s) (Title・Author・Publisher・Price)】

The Foundations of Buddhism, Rupert Gethin (Oxford University Press, 1998), from ¥3,451

The Experience of Buddhism: Sources and Interpretations, John S. Strong (Wadsworth Publishing, 2007), from ¥2,901

Other materials will be provided in class.

参考文献【Recommended Literature】

Other recommended books will be introduced in class lectures.

受講上の注意・担当者からのひとこと【Important Considerations/Notes from Instructor】

授業科目名【Class Title】	単位【Credits】	担当者【Class Instructor】	
Buddhist Thought B	2	Lisa Grumbach	
サブテーマ【Sub Theme】		開講期【Semester】	曜講時【Day & Period】
East Asian and Japanese Buddhist Traditions		2nd Semester	Fri 4
到達目標【Attainment objectives】			
This semester is the second half of a year-long course that surveys the major historical and doctrinal developments of the Buddhist tradition. The first semester focused on the Indian beginnings of the religion. The second semester turns to Buddhism in East Asia, examining how the religion was adopted in the region, and the development of new doctrines, practices, and schools in China, Korea and Japan. The latter part of the course will focus on the development of the Pure Land traditions and the teachings of Shinran as the founder of the Jodo Shinshu tradition in Japan. In addition to this substantive material, we will also consider methodologies used in Buddhist studies and religious studies.			
講義概要【Lecture Outline】			
Week 1 Introduction: Buddhism in Early China			
Week 2 The Sinification of Buddhism I: The Tiantai School and the Problem of Enlightenment (Sudden versus Gradual Enlightenment)			
Week 3 The Sinification of Buddhism II: The Huayan School and the Idea of Buddha-nature			
Week 4 The Chan School and the Meaning of "Meditation"			
Week 5 Buddhism in Korea			
Week 6 The Magical and Miraculous in East Asian Buddhism			
Week 7 Buddhism in Early Japan: Buddhism and the State			
Week 8 Saicho, Kukai, and the Development of the Tendai and Shingon Schools			
Week 9 The Kamakura Period: "Original Enlightenment" (<i>hongaku</i>) and New Schools of Buddhism (Zen, Pure Land, Nichiren)			
Week 10 The Japanese Zen Schools: Rinzai and Soto			
Week 11 Honen and the Beginnings of the Pure Land Schools			
Week 12 Shinran as the Founder of Jodo Shinshu: Life and Teachings			
Week 13 Shinran's Family: Spreading the Teachings, Creating the School			
Week 14 Jodo Shinshu Teachings: Shinjin (entrusting) and the Nembutsu			
Week 15 The <i>Tannisho</i> : Encapsulating Jodo Shinshu Faith and Practice			
講義方法【Lecture Method】			
Classroom lecture and discussion will be based on weekly reading materials. Each week students should select two sections or paragraphs of interest from the reading, in order to facilitate our in-class discussions (the selected passages should be typed and submitted to the instructor at the end of each class).			
授業時間外における予・復習等の指示【Direction related to study out of class】			
Students should read the weekly assignment before coming to class each week. Each student should select two sections or passages from the reading, type up and print the selections, and bring them to class to facilitate our discussion of the reading material.			
Additionally, depending on student interest, will we arrange visits to Kyoto-area temples that help to illustrate concepts discussed in class (such as the Zen temple Kenninji or the Jodo Shinshu headquarters of Nishi Honganji). These visits will be optional and arranged outside of regular class time.			

試験方法・成績評価方法【Testing and Grading Method】
70% class discussion (includes the two selected passages from the reading) 30% three short research notes (1-2 pages), each on a single term, concept, or development within Buddhism
テキスト（書名・著者名・出版社名・価格）【Textbook(s) (Title・Author・Publisher・Price)】
<i>Buddhism in Practice</i> , ed. by Donald S. Lopez, Jr., Abridged Edition (Princeton University Press, 2015), ¥3881 <i>Letters of the Nun Eshinni</i> , by James Dobbins (University of Hawaii Press, 2004), ¥3171
Other materials will be provided in class.
参考文献【Recommended Literature】
Other recommended books will be introduced in class lectures.
受講上の注意・担当者からのひとこと【Important Considerations/Notes from Instructor】

1. A（前期）とB（後期）の授業内容同一（A・B重複受講不可）／2. A（前期）とB（後期）の授業内容異なる（A・B重複受講可）

授業科目名【Class Title】	単位 【Credits】	担当者【Class Instructor】	
Introductory Japanese I	1	Asako Sakamoto	
サブテーマ【Sub Theme】		開講期 【Semester】	曜講時 【Day & Period】
Basic Japanese Expressions and Phrases		2nd	Tue / Wed / Thu 1st
到達目標【Attainment objectives】			
CEFR A1.2			
・ Can understand and use familiar everyday expressions and very basic phrases.			
・ Can introduce him/herself and others and can ask and answer questions about basic personal details.			
・ Can interact in a simple way provided the other person talks slowly and clearly and is prepared to help.			
講義概要【Lecture Outline】			
The class will be focused on topics such as “directions”, “shopping”, “transportation”, “eating” and others.			
講義方法【Lecture Method】			
Various activities not only in the classroom but outside.			
授業時間外における予・復習等の指示【Direction related to study out of class】			
Students should review previous lessons through homework and be prepared for the next class.			
試験方法・成績評価方法【Testing and Grading Method】			
Examination	30%		
Quiz	30%		
Class performance	20%		
Presentation	20%		
テキスト（書名・著者名・出版社名・価格）【Textbook(s) (Title・Author・Publisher・Price)】			
NIHONGO FUN&EASY Survival Japanese Conversation for Beginners			
Yukiko Ogata, Kana Sumitani, Yasuko Hidari and Yukiko Watanabe			
ASK			
¥2,052			
参考文献【Recommended Literature】			
Lecture Handouts			
受講上の注意・担当者からのひとこと【Important Considerations/Notes from Instructor】			
・ Students have to be self-motivated and proactively participate in the class.			
・ Students need to respect others and cooperate with each other in the class.			

2018 年度シラバス（講義概要・授業計画）

授業科目名【Class Title】	単位 【Credits】	担当者【Class Instructor】
Introductory Japanese II	1	Asako Sakamoto
サブテーマ【Sub Theme】	開講期 【Semester】	曜講時 【Day & Period】
Basic Japanese Expressions and Phrases	2nd	Tue / Wed 2nd Thu 1st
到達目標【Attainment objectives】		
CEFR A2.1		
<ul style="list-style-type: none"> • Can acquire the basic sentence patterns that will allow you to create and speak your own phrases. • Can incorporate various sentence patterns into daily conversation. • Can express yourself in the various basic expressions and phrases. 		
講義概要【Lecture Outline】		
The class will be focused on the sentence patterns such as “plan”, “judgment”, “request”, “hope” and others.		
講義方法【Lecture Method】		
Various activities not only in the classroom but outside.		
授業時間外における予・復習等の指示【Direction related to study out of class】		
Students should review previous lessons through homework and be prepared for the next class.		
試験方法・成績評価方法【Testing and Grading Method】		
Examination	30%	
Quiz	30%	
Class performance	20%	
Presentation	20%	
テキスト（書名・著者名・出版社名・価格）【Textbook(s) (Title・Author・Publisher・Price)】		
(It might be changed.)		
NIHONGO FUN&EASY II Basic Grammar for Conversation		
Yukiko Watanabe, Yasuko Hidari and Shizuko Usui		
ASK		
¥2,160		
参考文献【Recommended Literature】		
Lecture Handouts		
受講上の注意・担当者からのひとこと【Important Considerations/Notes from Instructor】		
<ul style="list-style-type: none"> • Students have to be self-motivated and proactively participate in the class. • Students need to respect others and cooperate with each other in the class. 		

授業科目名【Class Title】	単位 【Credits】	担当者【Class Instructor】	
Exploring Business in Kyoto	2	AKIBA Futoshi, HAYASHI Naoki, FUJIOKA Akiko	
サブテーマ【Sub Theme】		開講期 【Semester】	曜講時 【Day & Period】
Finding manufacturing competitiveness in Kyoto		2 nd semester	Mon. 4
到達目標【Attainment objectives】			
After participating in this class, the student will be able to: demonstrate knowledge about manufacturing business in Kyoto.			
講義概要【Lecture Outline】			
Three members of the teaching staff provide students with opportunities to experience the essence of manufacturing in Kyoto. The class consists of two parts: Theory and fieldwork. Firstly, participants learn about location theory and manufacturing business in Kyoto. With this theoretical knowledge, then, students will visit three factories (or craft centers) in Kyoto with the class instructors.			
<ol style="list-style-type: none"> 1. Lecture on the destination facilities 2. Preparation for visiting destination facilities. 3. Field work (1) 4. Discussion and report writing for the facilities visited in the preceding week (1) 5. Discussion and report writing for facilities visited, continued (2) 6. Lecture on the destination facilities 7. Preparation for visiting destination facilities. 8. Field work (2) 9. Discussion and report writing for the facilities visited in the preceding week (1) 10. Discussion and report writing for facilities visited, continued (2) 11. Lecture on the destination facilities 12. Preparation for visiting destination facilities. 13. Field work (3) 14. Discussion and report writing for the facilities visited in the preceding week (1) 15. Discussion and report writing for facilities visited, continued (2) 			
講義方法【Lecture Method】			
In this class, we will take an active learning approach in both lectures and field works. This approach requires students to both prepare for the class and review learned material. Students should produce some report write-ups on visited places to complete the class.			
授業時間外における予・復習等の指示【Direction related to study out of class】			
Students are required to produce reports on their visits to the class instructors in charge.			
試験方法・成績評価方法【Testing and Grading Method】			
Participation: 25%, Field Work 1: 25%, Field Work 2: 25%, Field Work3: 25%.			
テキスト（書名・著者名・出版社名・価格）【Textbook(s) (Title・Author・Publisher・Price)】			
Lecture Handouts			
参考文献【Recommended Literature】			
The instructor (professor) for each unit will provide students with necessary reading materials.			
受講上の注意・担当者からのひとこと【Important Considerations/Notes from Instructor】			
None.			

授業科目名【Class Title】	単位 【Credits】	担当者【Class Instructor】	
Understanding and Creating Financial Reports	2 credits	Tetsuhiro Kishita	
サブテーマ【Sub Theme】	開講期 【Semester】	曜講時 【Day & Period】	
Introduction to the Japanese Business World	First semester	Mon. 4	
到達目標【Attainment objectives】			
After participating in this class, the student will be able to: demonstrate comprehensive knowledge in business studies through financial reports.			
講義概要【Lecture Outline】			
This is an introductory-level course on Japan's industrial society, focusing on Japanese manufacturing companies. This course consists of three parts: Japanese industry, Japanese companies, and a new trend in consumer markets of Japan. Part One: Understanding the Industrial Society of Japan 1. Japan's economic development after World War II 2. Japan's traditional industrial society and culture 3. Changes in the industrial structure 4. Internationalization and globalization of the Japanese Economy 5. Future of Japan's economy Part Two: Business Analysis of Japanese Companies 6. Reading of Financial Statements 7. Understanding of strategy and performance through Annual Reports 8. Business analysis: Case-study 1 9. Business analysis: Case-study 2 10. Business analysis: Write up a case-study analysis Part Three: A New Trend in Consumer Markets: The Rise of The Sharing Economy 11. Enough is Enough 12. From Generation Me to Generation We 13. The Rise of Collaborative Consumption 14. Better Than Ownership 15. Conclusion			
講義方法【Lecture Method】			
This class takes an active learning approach. Students are expected to discuss matters of the day from various points of view. This approach requires students to do the assigned readings. After finishing each unit, students should produce an essay on the matters discussed.			
授業時間外における予・復習等の指示【Direction related to study out of class】			
Reading assigned parts of the distributed material.			
試験方法・成績評価方法【Testing and Grading Method】			
Participation and Presentation: 70%, Written essays: 30%			
テキスト（書名・著者名・出版社名・価格）【Textbook(s) (Title・Author・Publisher・Price)】			
Lecture Handouts			
参考文献【Recommended Literature】			
The instructor will provide students with necessary reading materials.			
受講上の注意・担当者からのひとこと【Important Considerations/Notes from Instructor】			
None.			

授業科目名【Class Title】	単位【Credits】	担当者【Class Instructor】	
Fieldwork in Ryukoku Museum	2 Credits	KAMEYAMA Takahiko	
サブテーマ【Sub Theme】		開講期【Semester】	曜講時【Day & Period】
		1st Semester	Friday 2
到達目標【Attainment objectives】			
Acquiring the knowledge of the developmental history of Buddhist culture in Asian countries, especially Japan			
講義概要【Lecture Outline】			
<p>The “Ryukoku Museum” near Ryukoku University Omiya Campus (original campus of Ryukoku) possesses a wide variety of important cultural artifacts centered on Buddhism, and actively organizes interesting exhibitions and research projects which feature them. These exhibitions and research projects enable us to understand intuitively how Buddhism was initiated in ancient India, and in what way it spread and developed multiply in various Asian countries including Japan. The main component of the class is the “fieldwork” in this comprehensive museum of Buddhism. In a series of lectures, we will frequently visit the Ryukoku Museum, and see some exhibitions and projects. Based on these experiences, I hope to provide students with the broad knowledge of Buddhist traditions and their cultural heritages in Asian countries, especially Japan.</p> <p>Buddhism was initiated by Śākyamuni Buddha in ancient India, and transmitted to Japan through China and Korean peninsula until around AD sixth century. The Ryukoku Museum holds the fruitful exhibitions and research projects on such spread and development of Buddhism in Asian region and related issues several times in a year. For example, the Museum will hold following two exhibitions during the first semester 2018: “The World of Śākyamuni: A Person Who Became the Buddha” (お釈迦さんワールド：ブッダになったひと) and “The Thought and Culture of Buddhism: From India to Japan II” (仏教の思想と文化：インドから日本へ 2). First, we will visit these exhibitions and learn the historical narrative of Śākyamuni as the founder of Buddhism and the development of Buddhist culture in Japan.</p> <p>In addition, we will also visit other academic facilities in Ryukoku University such as the Ryukoku Omiya Library, and famous Buddhist temples in Kyoto such as Nishi Honganji temple or Toji temple for a better understanding of historical and artistic materials of Japanese Buddhist tradition. The specific contents of the class are as follows.</p> <p>Introduction</p> <p>Tour of the special exhibition “The World of Śākyamuni: A Person Who Became the Buddha” and related lectures</p> <p>Tour of the concept exhibition “The Thought and Culture of Buddhism: From India to Japan II” and related lectures</p> <p>Backyard tour of the Ryukoku Museum</p> <p>Tour of the Ryukoku University Omiya campus and library</p> <p>Field trip to Buddhist temple in Kyoto (Nishi Honganji temple, Toji temple, and so forth)</p>			
講義方法【Lecture Method】			
<p>The lectures will be given basically in the Ryukoku Museum and classroom. First, we will observe the exhibitions in the Ryukoku Museum, and discuss the related issues in a classroom. In a classroom, I will also give students a handout and conduct a lecture in accordance with it. In addition, we will make a few field trips to the Ryukoku Omiya Library and Buddhist temples in Kyoto in order to experience the historical environment around the Ryukoku Museum.</p>			
授業時間外における予・復習等の指示【Direction related to study out of class】			
Please prepare for each lecture based on information which I previously provide for students.			
試験方法・成績評価方法【Testing and Grading Method】			
Class participation and attendance 30%, Final paper 70%			
テキスト（書名・著者名・出版社名・価格）【Textbook(s) (Title・Author・Publisher・Price)】			
Lecture Handouts			
参考文献【Recommended Literature】			
Lecture Handouts			
受講上の注意・担当者からのひとこと【Important Considerations/Notes from Instructor】			
In the tours in the Ryukoku Museum and other facilities, you should refrain from talking, and be careful that you do not trouble other visitors.			

授業科目名【Class Title】	単位【Credits】	担当者【Class Instructor】
Fieldwork in Ryukoku Museum	2 Credits	KAMEYAMA Takahiko
サブテーマ【Sub Theme】	開講期【Semester】	曜講時【Day & Period】
	2nd Semester	Friday 2
到達目標【Attainment objectives】		
Acquiring the knowledge of the developmental history of Buddhist culture in Asian countries, especially Japan		
講義概要【Lecture Outline】		
<p>The “Ryukoku Museum” near Ryukoku University Omiya Campus (original campus of Ryukoku) possesses a wide variety of important cultural artifacts centered on Buddhism, and actively organizes interesting exhibitions and research projects which feature them. These exhibitions and research projects enable us to understand intuitively how Buddhism was initiated in ancient India, and in what way it spread and developed multiply in various Asian countries including Japan. The main component of the class is the “fieldwork” in this comprehensive museum of Buddhism. In a series of lectures, we will frequently visit the Ryukoku Museum, and see some exhibitions and projects. Based on these experiences, I hope to provide students with the broad knowledge of Buddhist traditions and their cultural heritages in Asian countries, especially Japan.</p> <p>Buddhism was initiated by Śākyamuni Buddha in ancient India, and transmitted to Japan through China and Korean peninsula until around AD sixth century. The Ryukoku Museum holds the fruitful exhibitions and research projects on such spread and development of Buddhism in Asian region and related issues several times in a year. For example, the Museum will hold following two exhibitions during the second semester 2018: “Shigeru Mizuki: Manga of the Soul” (水木しげる 魂の漫画展) and “The Thought and Culture of Buddhism: From India to Japan III” (仏教の思想と文化：インドから日本へ3). First, we will visit these exhibitions and learn the influence of Buddhism and Japanese religion upon the Japanese Manga culture and the development of Buddhist culture in Japan.</p> <p>In addition, we will also visit other academic facilities in Ryukoku University such as the Ryukoku Omiya Library, and famous Buddhist temples in Kyoto such as Nishi Honganji temple or Toji temple for a better understanding of historical and artistic materials of Japanese Buddhist tradition. The specific contents of the class are as follows.</p> <p>Introduction</p> <p>Tour of the special exhibition “Shigeru Mizuki: Manga of the Soul” and related lectures</p> <p>Tour of the concept exhibition “The Thought and Culture of Buddhism: From India to Japan III” and related lectures</p> <p>Backyard tour of the Ryukoku Museum</p> <p>Tour of the Ryukoku University Omiya campus and library</p> <p>Field trip to Buddhist temples in Kyoto (Nishi Honganji temple, Toji temple, and so forth)</p>		
講義方法【Lecture Method】		
<p>The lectures will be given basically in the Ryukoku Museum and classroom. First, we will observe the exhibitions in the Ryukoku Museum, and discuss the related issues in a classroom. In a classroom, I will also give students a handout and conduct a lecture in accordance with it. In addition, we will make a few field trips to the Ryukoku Omiya Library and Buddhist temples in Kyoto in order to experience the historical environment around the Ryukoku Museum.</p>		
授業時間外における予・復習等の指示【Direction related to study out of class】		
Please prepare for each lecture based on information which I previously provide for students.		
試験方法・成績評価方法【Testing and Grading Method】		
Class participation and attendance 30%, Final paper 70%		
テキスト（書名・著者名・出版社名・価格）【Textbook(s) (Title・Author・Publisher・Price)】		
Lecture Handouts		
参考文献【Recommended Literature】		
Lecture Handouts		
受講上の注意・担当者からのひとこと【Important Considerations/Notes from Instructor】		
In the tours in the Ryukoku Museum and other facilities, you should refrain from talking, and be careful that you do not trouble other visitors.		

授業科目名【Class Title】	単位【Credits】	担当者【Class Instructor】
Kyoto Studies A	2	Paul Carty
サブテーマ【Sub Theme】	開講期【Semester】	曜講時【Day & Period】
History, Art, Literature, Religion of Kyoto	1 st (Spring)	Wed 3
到達目標【Attainment objectives】		
Students will read, discuss and reflect upon the cultural forces that shape present day Kyoto.		
講義概要【Lecture Outline】		
1. Introduction: Geography and Pre=Heian Kyoto 2. Emperor Kammu and Heian-Kyo 3. Early Kyoto Poetry: Kokinshu 4. Tale of Genji- Heian Culture 5., Murasaki Shikibu, Izumi Shikibu, and Sei Shonagon readings 6. Buddhism, Amida 7. Readings on Kukai, Honen, Shinran 8. Heike, Late Heian: Yoshitsune and Kamakura 9. Readings from Kamo-no-Chomei, Saigyō, and Kyoto Poetry 10. Zen: Ashikaga Rulers, Zen Temples in Kyoto 11. Readings from Zen Poetry, Heart Sutra 12. Muromachi Art: Dry Rock Gardens, Zen Art 13. Muromachi Poetry and Noh 14. Noh Texts 15. Presentation		
講義方法【Lecture Method】		
This class will be a combination of the teacher' lecture, partner discussion and small group discussion. Students will ask each other and the teacher questions about the reading, discuss the homework questions and finally the teacher will summarize key points for that lesson.		
授業時間外における予・復習等の指示【Direction related to study out of class】		
Students must visit some locations outside of the class for their presentation.		
試験方法・成績評価方法【Testing and Grading Method】		
Grading Formula: Homework- 40%/ Classwork and Discussion – 30% / Presentation and Paper- 30%		
テキスト（書名・著者名・出版社名・価格）【Textbook(s) (Title・Author・Publisher・Price)】		
<ul style="list-style-type: none"> Text Book: Kyoto / John Dougill/ Signal Books, Oxford 2006 ISBN-13: 978-1904955139 You can buy the Kindle ebook or the paperback edition. 		
参考文献【Recommended Literature】		
The Tale of Genji, Seidensticker or Tyler translation Pillow Book, trans. by McKinney, M. Zen and Kyoto, Einarsen, J. Kyoto: An Urban History of Japan's Premodern Capital, Stavros, M.		
受講上の注意・担当者からのひとこと【Important Considerations/Notes from Instructor】		
For each class students will have about 30 pages of reading for homework. You must read and respond in writing to each week's reading. Please be prepared to work hard in this class.		

授業科目名【Class Title】	単位【Credits】	担当者【Class Instructor】	
Kyoto Studies B	2	Paul Carty	
サブテーマ【Sub Theme】		開講期【Semester】	曜講時【Day & Period】
History, Art, Politics, Literature		2nd (Fall)	Wed 3
到達目標【Attainment objectives】			
Students will get a deep understanding of the cultural forces that shape present day Kyoto.			
講義概要【Lecture Outline】			
1. Hideyoashi and Nobunaga 2. Readings from the European Visitors to Kyoto 3. Tea 4. Readings related to Tea. 5. Edo Period 6. Readings and poetry from Early Edo 7. Late Edo texts. 8. Art and Ceramics 8. Maiko and Geisha 9. Readings on Maiko and Geisha and Kabuki 10. Meiji Period 11. Education in Kyoto 12. Movies 13. Textiles and Kimono 14. Reading and Poetry from contemporary poets 15. Final Presentation			
講義方法【Lecture Method】			
This class will be a combination of the teacher's lecture, partner discussion and small group discussion. Students will ask each other and the teacher questions about the reading, discuss the homework questions and finally the teacher will summarize key points for that lesson.			
授業時間外における予・復習等の指示【Direction related to study out of class】			
Students must visit some locations outside of the class for their presentation.			
試験方法・成績評価方法【Testing and Grading Method】			
Grading Formula: Homework- 40%/ Classwork and Discussion – 30% / Presentation and Paper- 30%			
テキスト（書名・著者名・出版社名・価格）【Textbook(s) (Title・Author・Publisher・Price)】			
<ul style="list-style-type: none"> Text Book: Kyoto / John Dougill/ Signal Books, Oxford 2006 ISBN-13: 978-1904955139 			
参考文献【Recommended Literature】			
Hideyoshi, Berry, Mary Elizabeth Japonius Tyrannus, Lamers, Jeroen Collected Haiku of Yosa Buson,, Merwin, W.S.			
受講上の注意・担当者からのひとこと【Important Considerations/Notes from Instructor】			

1. A（前期）とB（後期）の授業内容同一（A・B重複受講不可）／2. A（前期）とB（後期）の授業内容異なる（A・B重複受講可）

授業科目名【Class Title】	単位【Credits】	担当者【Class Instructor】	
Japanese Religions A	2	KAMEYAMA Takahiko	
サブテーマ【Sub Theme】	開講期【Semester】	曜講時【Day & Period】	
Religion and Art in Japan: The Significance of Religious and Imaginary Representation in Japanese Society	Semester 1	Friday 4	
到達目標【Attainment objectives】			
Acquiring the knowledge of material and artistic culture of Japanese religion.			
講義概要【Lecture Outline】			
<p>A lot of multiple religious and imaginary representations are still extant and significantly influential in each country in Asian region even today. Needless to say, Japan is one of such Asian countries. In this country, diverse Buddhist, Shinto, Daoist, and other religious images such as the statues, paintings, and drawings of Buddhas, bodhisattvas, gods (<i>kami</i>), indigenous demons, divine religious practitioners (<i>shugenja</i>), and ghosts have been inherited by people in an unbroken line to the present day. On the one hand, we are able to relatively easily appreciate these items as precious wonderful art works in some exhibitions held in eminent museums such as Tokyo and Kyoto National Museum. On the other hand, however, we also have to fully recognize their religious significance and strong connection with specific religious facilities.</p> <p>The Japanese people also have successively transmitted a lot of diverse religious rituals, both public and private or institutional and individual, as their own cultural heritage. These rituals include the “new year festival” (<i>hatsumōde</i>), “wedding” (<i>kekkonshiki</i>), and “funerary rite” (<i>sōshiki</i>), and it is noteworthy that the aforementioned statues, paintings, and drawings frequently function as the main objects of worship in them. In addition, most of these images are possessed not by eminent museums or art galleries but by Buddhist temples or Shinto shrines even today.</p> <p>Through lectures, first and foremost, I hope to introduce the diverse religious and imaginary representations which are widely circulated throughout Japanese society, and to discuss their influence. I also hope to expound the common characteristics shared by them. In addition, I will examine what significance and function such religious images actually have in contemporary Japan and the world of pop culture. Specifically, we will discuss following issues:</p> <p>Festival (<i>matsuri</i>) in Japan; “Other World” on the Mountain in Japan; Art in the “Mixture between Kami and Buddha” (<i>shinbutsu shūgō</i>); Contemporary Japanese Culture and Religious Images etc.</p>			
講義方法【Lecture Method】			
<p>I will give students a handout in each lecture. I will conduct a lecture basically in accordance with this handout. In each lecture, I will also provide the time for discussion in which I hope to actively answer questions from students. Students are required to have a presentation about issues concerned with Japanese religions and culture at the end of the semester.</p> <p>In addition, we will make a few field trips to the Buddhist temples or Shinto shrines to which I will refer in the lecture, and actually see the influence of the religious and imaginary representations upon Japanese society.</p>			
授業時間外における予・復習等の指示【Direction related to study out of class】			
Please prepare for each lecture based on information which I previously provide for students.			
試験方法・成績評価方法【Testing and Grading Method】			
<p>Grade will be based on (1) class participation (30%), (2) student presentation (40%), and (3) final research paper (30%).</p> <p>Students are required to have a presentation in English, and to submit a research paper written in English at the end of the semester. The subject of a presentation and research paper has to be concerned with Japanese religions and culture.</p>			
テキスト（書名・著者名・出版社名・価格）【Textbook(s) (Title・Author・Publisher・Price)】			
Lecture Handouts			
参考文献【Recommended Literature】			
Lecture Handouts			
受講上の注意・担当者からのひとこと【Important Considerations/Notes from Instructor】			
I hope that students actively participate in lectures.			

授業科目名【Class Title】	単位【Credits】	担当者【Class Instructor】	
Japanese Religions B	2	KAMEYAMA Takahiko	
サブテーマ【Sub Theme】		開講期【Semester】	曜講時【Day & Period】
Shinto in Japanese History: Historical and Sociological Analysis of the Development of the "Japanese Indigenous Religion"		Semester 1	Friday 4
到達目標【Attainment objectives】			
Acquiring the knowledge of developmental history of Shinto in Japan.			
講義概要【Lecture Outline】			
<p>Some introductory books concerning Japanese culture frequently describe that the religious tradition called Shinto and the faith in Japanese local gods such as Izanagi, Amaterasu, Susanoo, or Inari are the "Japanese indigenous religion." According to these introductory books, they have continuously existed and permeated through Japan since prehistoric time period, and constituted the most profound stratum of Japanese society and culture.</p> <p>However, as such scholars of Japanese religion as Satoshi Itō, John Breen, and Mark Teeuwen have clearly pointed out, the actual situation is much more complicated. First, it is highly possible that Shinto and its main components such as the idea of "god" (<i>kami</i>), "shrine" (<i>yashiro</i> or <i>jinja</i>), and "impurity" (<i>kegare</i>) were gradually established within the complex political religious situation in Japan. In addition, it is also assumed that they received significant influence from foreign religions, especially from Buddhism which was initiated in North India in B.C. 5th century and transmitted to Japan through China and Korean peninsula until around AD 6th century.</p> <p>Through lectures, first and foremost, I hope to introduce the developmental history of Shinto in Japan. I will mainly discuss the process of formation of this notion and the concept of Kami during medieval and early modern time period. In addition, I will also examine its influence upon the language, economics, industry, agriculture, philosophy, and art in Japan from historical and sociological perspective. Specifically, we will discuss following issues:</p> <p>Genealogy of Kami and Shinto in Japan; Culture of the "Mixture between Kami and Buddha" (<i>shinbutsu shūgō</i>); Historical Significance of the Fushimi Inari Shrine; Development of Shinto in Early Modern Japan etc.</p>			
講義方法【Lecture Method】			
<p>I will give students a handout in each lecture. I will conduct a lecture basically in accordance with this handout. In each lecture, I will also provide the time for discussion in which I hope to actively answer questions from students. Students are required to have a presentation about issues concerned with Shinto or other religious traditions in Japan at the end of the semester.</p> <p>In addition, we will make a few field trips to the Shinto shrines or Buddhist temples to which I will refer in the lecture, and actually see the historical traces of the development of Shinto, the "Japanese indigenous religion."</p>			
授業時間外における予・復習等の指示【Direction related to study out of class】			
Please prepare for each lecture based on information which I previously provide for students.			
試験方法・成績評価方法【Testing and Grading Method】			
<p>Grade will be based on (1) class participation (30%), (2) student presentation (40%), and (3) final research paper (30%).</p> <p>Students are required to have a presentation in English, and to submit a research paper written in English at the end of the semester. The subject of a presentation and research paper has to be concerned with Shinto or other religious traditions in Japan.</p>			
テキスト（書名・著者名・出版社名・価格）【Textbook(s) (Title・Author・Publisher・Price)】			
Lecture Handouts			
参考文献【Recommended Literature】			
Lecture Handouts			
受講上の注意・担当者からのひとこと【Important Considerations/Notes from Instructor】			
I hope that students actively participate in lectures.			

A（前期）とB（後期）の授業内容異なる（A・B重複受講可）

授業科目名【Class Title】	単位【Credits】	担当者【Class Instructor】
Japanese Media and Arts	2	Jessica Bauwens-Sugimoto
サブテーマ【Sub Theme】	開講期【Semester】	曜講時【Day & Period】
Fashion in Japanese Media/Japanese Fashion in Media	Semester 2	Monday 3
到達目標【Attainment objectives】		
Students should be able to recognize major trends from the past decades across media like magazines, websites, documentaries, and film, as well as be able to discuss the presentation of various fashion trends across these media.		
講義概要【Lecture Outline】		
There has been a notable taste for Japonisme in fashion Since the 19 th century. In the late 1970s, early 1980s, high end Japanese fashion took over Paris runways, and since the late 1990s, Japanese street wear has been influencing trends worldwide. Japanese fashion has been called everything from artistic to scandalous, weird, and crazy, but is now mainstream with brands like Uniqlo selling basic clothing items worldwide. Japanese fashion as pop culture is also part of “media mix”, with media like manga, anime, games and film (like <i>Kamikaze Girls</i>) influencing what especially young people want to wear, and the boundaries of what is fashion and what is cosplay occasionally blurring. We will be looking at traditional as well as contemporary fashion, and both fashion in the mainstream as well as in a variety of subcultures.		
講義方法【Lecture Method】		
In this class we will take a look at a number of resources and media that deal with fashion, in Japanese and English (and others, if available with English subtitles). These include documentaries, films, mainstream articles as well as academic texts. We will read or watch them together, then analyze and discuss them. Students will be asked to give two presentations during this term (one a review of an article or chapter discussed in class, one on a self-selected topic relating to Japanese fashion)		
授業時間外における予・復習等の指示【Direction related to study out of class】		
Please prepare readings before coming to class, and watch the news, paying attention to news items related to fashion. People watch on your way to school and pay attention to what people are wearing. Go to the library or a bookstore regularly and leaf through some publications on fashion.		
試験方法・成績評価方法【Testing and Grading Method】		
50% class participation (discussion, presentations) 50% end of term report (2000 words)		
テキスト（書名・著者名・出版社名・価格）【Textbook(s) (Title・Author・Publisher・Price)】		
MONDEN, Masafumi: <i>Japanese Fashion Cultures</i> , Bloomsbury Academic, 2229 on Kindle, 3451 paperback. Other required readings will be available on the MANABA system as pdf files or URLs, under “course contents” and “course news.”		
参考文献【Recommended Literature】		
VARTANIAN, Ivan, and Tiffany GODOY: <i>Style Deficit Disorder: Harajuku Street Fashion – Tokyo</i> . Chronicle Books, 2007. CLIFFE, Sheila: <i>The Social Life of Kimono: Japanese Fashion Past and Present</i> , Bloomsbury USA Academic, 2017. 深井晃子 『きものとジャポニズム：西洋の眼が見た日本の美意識』 2017 竹村真奈 『まんがファッション』 2012 矢沢あい 『パラダイスキス』 / Yazawa Ai, <i>Paradise Kiss</i> series, 1999~2003		
受講上の注意・担当者からのひとこと【Important Considerations/Notes from Instructor】		
Please take notes during every class; these notes will help you write your end of term report.		

授業科目名【Class Title】	単位 【Credits】	担当者【Class Instructor】	
Japanese society	2	Milos DEBNAR	
サブテーマ【Sub Theme】		開講期 【Semester】	曜講時 【Day & Period】
Topics in contemporary Japanese society		Semester 2	Tuesday 4
到達目標【Attainment objectives】			
Students should achieve better understanding of some of the main issues that contemporary Japanese society faces. Moreover, students should be able to critically assess common stereotypes or views of Japan based on cultural essentialism.			
講義概要【Lecture Outline】			
<p>This course explores various aspects of the contemporary Japanese society and connects them with the modern development of Japan. Topics addressed by this course include demography, family, work, education or stratification and inequality in Japan today. We will focus on how these aspects of Japanese society have been changing in the face of advancing globalization or ageing society, as well as discuss the continuities from earlier periods of modern Japan.</p> <p>Rather than looking for some sort of general explanations, this course aims to demonstrate the multifaced character of social reality and different approaches towards it. In order to achieve this, we will use various sources ranging from theoretical explanations, through statistics and survey data, to movies.</p>			
講義方法【Lecture Method】			
Each class starts with a lecture followed by a group presentation by students and discussion. About two movies will be used for further illustration and deeper analysis of discussed material as well.			
授業時間外における予・復習等の指示【Direction related to study out of class】			
Reading assignments (each class) and preparation of a short group presentation (once in the semester) on discussed topic will be required.			
試験方法・成績評価方法【Testing and Grading Method】			
Class participation 30%, In-class presentation 35%, Final paper (1500-2000 words) 35%			
テキスト（書名・著者名・出版社名・価格）【Textbook(s) (Title・Author・Publisher・Price)】			
V.L. Bestor, T.C. Bestor, A. Yamagata eds., 2011, Routledge Handbook of Japanese Culture and Society, Routledge (copies to be provided)			
参考文献【Recommended Literature】			
Sugimoto, Y., 2014, Introduction to Japanese Society, 4th edition, Cambridge			
受講上の注意・担当者からのひとこと【Important Considerations/Notes from Instructor】			
Students are required to come to class prepared by finishing reading assignments. Discussion will be an essential part of the classes and students are required to actively participate in the class.			

授業科目名【Class Title】	単位 【Credits】	担当者【Class Instructor】
Japanese Technology	2	KIMURA Mutsumi NISHIHARA Michinori, HAMADA Hiroki, . YAMAMOTO Yoshitaka
サブテーマ【Sub Theme】	開講期 【Semester】	曜講時 【Day & Period】
	Semester 2	Friday 4
到達目標【Attainment objectives】		
The students can understand history, current situation, future possibility of Japanese Technology. Not only such things in one country, the students can have abilities to understand industries in any country.		
講義概要【Lecture Outline】		
<p>Japanese technologies have been used to produce many basic academics, practical engineering, and new products, which are highly evaluated at all over the world for all human beings happiness. In this “Japanese Technology”, several lecturers will give multiple topics related to the Japanese technologies, such as, semiconductor devices, light-emitting diodes, laser diodes, liquid-crystal displays, solar cells, artificial intelligence, etc. The management of technology (MOT) based on the history of products development and future technologies of Japan will be included. In addition, some effective methods of management and fabrication will be introduced by comparing Japanese ones and the others, which feature Japanese technologies.</p> <p>(01) KIMURA, NISHIHARA, HAMADA, YAMAMOTO (02) HAMADA (03) HAMADA (04) HAMADA (05) HAMADA (06) HAMADA (07) NISHIHARA (08) NISHIHARA (09) NISHIHARA (10) NISHIHARA (11) YAMAMOTO (12) YAMAMOTO (13) YAMAMOTO (14) YAMAMOTO (15) KIMURA, NISHIHARA, HAMADA, YAMAMOTO</p>		
講義方法【Lecture Method】		
The lecturers show some documents, explain them, and distribute handout if necessary. The detailed ways are different depending on the lecture. The contents for each class will be also told later.		
授業時間外における予・復習等の指示【Direction related to study out of class】		
Be interested in current news related to this lecture.		
試験方法・成績評価方法【Testing and Grading Method】		
The grade will be based on (1) discussion in the class (50%) and (2) reports as homework (50%).		
テキスト（書名・著者名・出版社名・価格）【Textbook(s) (Title・Author・Publisher・Price)】		
Lecture Handouts No Designated Text		
参考文献【Recommended Literature】		
受講上の注意・担当者からのひとこと【Important Considerations/Notes from Instructor】		
We will hold this lecture for understanding of some typical technologies in Japan. Welcome to attend to our lecture!		

授業科目名 【Class Title】 e	単位 【 Credits】	担当者 【Class Instructor】
Japanese Pop Culture	2	FURMANOVSKY, Michael
サブテーマ 【Sub Theme】	開講期	曜講時 【Tue 4】
Understanding Japanese Popular Culture in Historical Context	Semester 2	Tuesday 4
到達目標 【Attainment objectives】		
Students with an interest in contemporary Japanese popular culture will be given an introduction to the actual historical conditions and forces that led to its development. They will be able to transcend the many stereotypes held about today's popular culture by seeing how it was actually created in the post-war crucible and reimagined in the modern period.		
講義概要 【Lecture Outline】		
<p>This is an introduction to the historical development of Japanese popular culture and its emergence in the transnational world. The course starts with an overview of contemporary popular culture in Japan and then steps back to find the historical background for its current configuration. There will be five main strands, namely 1. Movies & TV, 2. Popular Music, 3. Animation/ Manga/Games, 4. Fashion/Kawai/Otaku styles and 5. Japan in Asia. We will also look at the efforts of government agencies to brand Japanese pop culture and its struggle to compete with Korean pop culture.</p> <ol style="list-style-type: none"> 1. Introduction & Brainstorming about notions of Japanese Popular Culture today 2. Post-war Japan and movies 3. Post-war Japan and popular music 4. 1960s pop culture and the birth of contemporary fashion 5. Student Presentations and Report I 6. Animation and TV 1970s 7. Japanization of Popular Music 1980s 8. Japanese Fashion and Europe 9. Gender and Popular Culture 1: Kawaii and Otaku 10. Student Presentations and Reports II 11. Manga, Games and Toys 12. Student Presentations 12. Japanese Movies: Domestic vs. Art House 13. Transnational Culture Circulation; Asian Connections 14. J-Pop and K-Pop 15. Review and Final Paper Presentations 		
講義方法 【Lecture Method】		
Students will be given readings for some of the classes and will use these as discussion materials in class. The class will be a combination of lecture and video documentary followed by discussion and occasional student presentations.		
授業時間外における予・復習等の指示 【Direction related to study out of class】		
The library's collection in combination with the pdfs given to students will allow for adequate study outside class		
試験方法・成績評価方法 【Testing and Grading Method】		
20% Class participation and presentations based on the readings 80% Presentations and Reports		
テキスト（書名・著者名・出版社名・価格）【Textbook(s) (Title・Author・Publisher・Price)】		
Lecture Handouts and Readings provided by the professor in pdf format		
参考文献 【Recommended Literature】		
Additional readings will be suggested according to the interests of the students		
受講上の注意・担当者からのひとこと 【Important Considerations/Notes from Instructor】		
Attendance is important and missing many classes will result in failing the class. Plagiarism is not tolerated and will result in failing the class (use references and quotations for all work from others).		

授業科目名【Class Title】	単位 【Credits】	担当者【Class Instructor】	
Special Lecture 1B Japan's diplomacy in the context of globalization	2	Kazuo WATANABE	
サブテーマ【Sub Theme】	開講期 【Semester】	曜講時 【Day & Period】	
Japan's diplomacy strategy in this unpredictable globalized world	Semester 2	Thursday 3	
到達目標【Attainment objectives】			
Students are expected to understand that a combination of geographical, historical, economic and cultural aspects have determined Japan's diplomacy to a greater extent and that Japan has diplomatic issues to solve with her neighboring countries.			
講義概要【Lecture Outline】			
<p>Boundaries are diminishing as globalization progresses, making movement of goods, money and people much easier. No single country can solve on their own, issues such as that of refugees, climate change and international terrorism. On the other hand, only a small percentage of people are able to enjoy the fruits of globalization, and consequently disparity or economic difference is widening throughout the world.</p> <p>Japan's international situation as of today is not an easy one. Tensions are mounting in Korean Peninsula, and China, under the strong leadership of Xi Jinping, continues to expand its influence over the East China Sea and South China Sea. The territorial problem with the Russian Federation is still far from resolution. US diplomacy and economic policy under the Trump Administration is very unpredictable, and accordingly, Japan will continue to be swayed by that. The situation in the Middle East is much more complicated, and the threat of terrorism by the Islamic fundamentalists still remains. Despite these complex conditions Japan must conduct her diplomacy in quest for peace and security of the East Asian region.</p> <p>As instructor of the course, the former Japanese Ambassador to the Republic of Colombia will shed light on Japan's current diplomatic strategy from various angles, based upon his own experience. During each class, after explanation by the instructor, informal and lively discussion will be encouraged among students as well as with the instructor.</p>			
講義方法【Lecture Method】			
<p>The aim of this course is to provide an overall view of Japan's diplomacy and to understand the challenges caused by globalization. The course will be conducted in the following manner:</p> <p>1) The instructor will give explanation and perspective on each theme.</p> <p>2) After this, there will be informal discussion among students and/or with the instructor.</p> <p>3) Students are required to make a presentation at least once on a certain aspect of Japan's diplomacy as well as sit for a final examination.</p>			
授業時間外における予・復習等の指示【Direction related to study out of class】			
Necessary homework will be announced at class if any.			
試験方法・成績評価方法【Testing and Grading Method】			
Class participation and attendance: 30%, Midterm presentation: 30%, Final written examination: 40%			
テキスト（書名・著者名・出版社名・価格）【Textbook(s) (Title・Author・Publisher・Price)】			
Lecture handouts or reading will be provided at class.			
参考文献【Recommended Literature】			
None recommended			
受講上の注意・担当者からのひとこと【Important Considerations/Notes from Instructor】			
This course is entirely in English. Therefore, a certain degree of English language proficiency is required. Knowledge and information on Japan as well as critical thinking and analysis of history would be useful.			

授業科目名【Class Title】	単位【Credits】	担当者【Class Instructor】
Japanese Literature & Movies	2	ANTONONOKA Olga
サブテーマ【Sub Theme】	開講期【Semester】	曜講時【Day & Period】
Media Specificity in Japanese Historical Context	Semester 1	Tuesday 4
到達目標【Attainment objectives】		
Throughout this course, we will look at development of Japanese traditional and contemporary media: adaptation, interpretation, media-mixes, relationships of the source and derivative materials, as well as the texts interaction with the reader. Participants will become aware of the media as a part of the message the narrative conveys. We will gain awareness of the media within Japanese historical context.		
講義概要【Lecture Outline】		
This class offers an introduction to historical development of Japanese media, looking at the prominent media such as Heian period novel, Noh Theater, Edo popular literature, Kabuki theater, film, anime and manga. Each media appeared in a specific historical period and served specific audiences. For example, Heian novel written in kana scripts appeared in aristocratic circles, Noh Theater became a celebrated art-form for military elite, while Kabuki became a form of proto-modern popular culture in Edo period. All of them frequently repeat and recycle same themes and characters.		
Same plots and characters appear through the ages, as adaptations and citation. Texts, such as <i>Genji Monogatari</i> (Murasaki Shikibu), <i>Heike Monogatari</i> , myths and legends had been reimagined through picture-scrolls and traditional theatric forms all the way to film, manga and anime. Each media adapted the recognizable contents to serve the historical period, intended audience's aesthetic and ideological expectations.		
講義方法【Lecture Method】		
On the basis of theoretical materials we will read and watch together and analyze the wide array of media from novels to traditional theater as well as manga and anime. First learning about their original context, we will also discuss their place in contemporary Japanese culture.		
Emphasis will be placed on supervised group work and active discussions. Student papers on textual analysis, comparison among theatre and other arts, or original plays, short-stories, comics are encouraged.		
This class was originally designed for international exchange students interested in acquiring a broad general knowledge about Japanese culture and media. For Japanese students, students with TOEFL score of more than 480 or who studied one or two semesters abroad are qualified to take this class.		
Partial materials will be provided in Japanese; however, this class puts a lot of emphasis on discussion and presentations.		
Japanese students without this level of English are encouraged to audit this class without credit, and to sit-in on any lectures of interest.		
授業時間外における予・復習等の指示【Direction related to study out of class】		
Reading materials, preparations for presentation, final essay		
試験方法・成績評価方法【Testing and Grading Method】		
30% class attendance and participation in discussion 40% group work (presentation) 30% essays or creative interpretations (own scenarios, comics, artwork etc) of the literary texts, performances, film, manga or anime seen.		
テキスト（書名・著者名・出版社名・価格）【Textbook(s) (Title・Author・Publisher・Price)】		
Lecture Handouts will all be provided. Readings will be given out in advance or placed in the library, including, but not limited to:		
<ul style="list-style-type: none"> Benjamin Walter, 2008. <i>The Work of Art in the Age of Mechanical Reproduction</i>, London: Penguin Berndt, Jaqueline, 2016b. "Manga, Which Manga? Publication Formats, Genres, Users", <i>Japanese Civilisation in the 21st Century</i>, ed. Andrew Targowsky, Juri Abe, Hisanori Kato, New York: Nova Publishers, 121-134 Jonah Salz, 2016. "History of Japanese Theatre" Cambridge University Press Shively, Donald H., 2012. <i>Bakufu Versus Kabuki</i>, <i>A Kabuki Reader: History and Performance</i>, ed. Leiter, Samuel L, New York: M.E. Sharp, 33-60 		
参考文献【Recommended Literature】		
<ul style="list-style-type: none"> Berndt, Jaqueline (ed), 2013. <i>Manga's Cultural Crossroads</i>, ed. by Berndt, Jaqueline and Kümmerling-Meibauer, Bettina, London: Routledge Leiter, Samuel L., 2001. <i>A Kabuki Reader: History and Performance</i>, London: Routledge, Jonah Salz, 2016. "History of Japanese Theatre" Cambridge University Press Zeami, 2006. <i>The Flowering Spirit: Classic Teachings on the Art of Nô</i>, Tokyo: Kodansha International 		
受講上の注意・担当者からのひとこと【Important Considerations/Notes from Instructor】		
We will be making a field trip to see Cinema Kabuki screening in Kyoto area. Students should prepare the time and expenses for these outings.		

授業科目名【Class Title】	単位 【Credits】	担当者【Class Instructor】	
Japanese History	2	Hideki Hiramatsu	
サブテーマ【Sub Theme】	開講期 【Semester】	曜講時 【Day & Period】	
Culture and Society of Japan	Semester1	Tuesday 4	
到達目標【Attainment objectives】			
Students understand various views of Japanese history			
講義概要【Lecture Outline】			
This course is an introduction to Japanese history. This course will also include a survey of various historical aspects of Japanese culture and society such as the acceptance of Buddhism, traditional status of women, and development of Japanese aesthetics. Students' willingness to participate in discussions and to conduct their own research is essential			
講義方法【Lecture Method】			
Students have a discussion on various issues in class after reading textbook Audio-video materials related on the issues are used for better understanding			
授業時間外における予・復習等の指示【Direction related to study out of class】			
Students prepare for class by reading designated textbook.			
試験方法・成績評価方法【Testing and Grading Method】			
Class Participation 50% End of Term Paper 50%			
テキスト（書名・著者名・出版社名・価格）【Textbook(s) (Title・Author・Publisher・Price)】			
Lecture Handouts			
参考文献【Recommended Literature】			
Lecture Handouts to be announced in the class			
受講上の注意・担当者からのひとこと【Important Considerations/Notes from Instructor】			
20 minutes late = absence. Requires minimum of two thirds class participation (10 classes out of 15).			

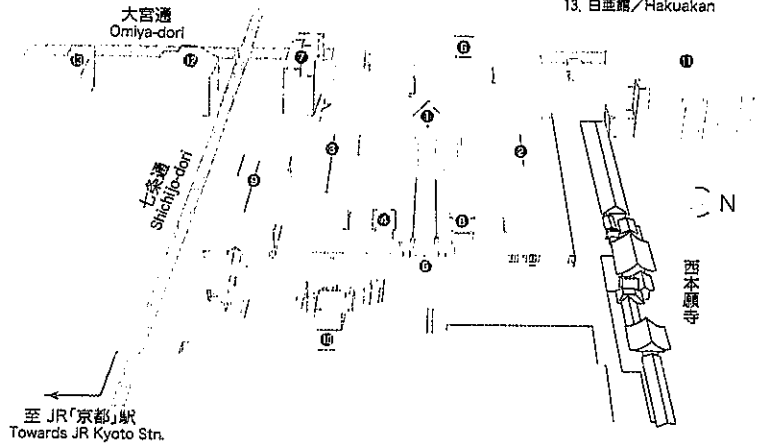
授業科目名【Class Title】	単位【Credits】	担当者【Class Instructor】
Japanese Economy and <i>Management</i>	2	Maria Ikeda
サブテーマ【Sub Theme】	開講期【Semester】	曜講時【Day & Period】
Current Issues in Japanese Economy and Business	Semester 1	Monday 4
到達目標【Attainment objectives】		
The aim of this course is to provide an overview of the Japanese economy and business management.		
講義概要【Lecture Outline】		
Week 1 Course orientation and introduction Week 2 GDP and economic growth Week 3 Aging, declining birth rates and population Week 4 Women in the workplace and closing the gender gap Week 5 Employment and the Job market in transition Week 6 Disaster risk management and the economy Week 7 Regional revitalization Week 8 Presentations and discussion (Mid-terms) Week 9 Field trip (1): Visit a factory to learn more about product development and quality management Week 10 Understanding Japanese management and business culture Week 11 Quality management and production Week 12 "Monozukuri", product development and knowledge creation in Japanese companies Week 13 Leadership and motivating performance in the Japanese company Week 14 Final Presentations: Japanese companies SWOT analysis Week 15 Final Presentations: Innovative companies core competence (Sequence of topics may vary. Any revisions in the above schedule will be announced in class.)		
講義方法【Lecture Method】		
The course will be conducted as follows: 1. Students discuss assigned readings and videos that will provide information about these issues in an economic perspective. 2. There will be lectures (by the instructor) and presentations (by students) to stimulate class interaction and discussion. Students are required to give presentations and submit short exercises for this course.		
授業時間外における予・復習等の指示【Direction related to study out of class】		
At least one field trip will be scheduled to supplement the lectures and discussions on product development, quality management and social contribution using concepts and techniques deeply rooted in Japanese tradition and culture. Students are expected to write a report about the field trip and to read about current events or the news in order to actively participate in discussions, give presentations and complete homework and/or exercises.		
試験方法・成績評価方法【Testing and Grading Method】		
Class participation & attendance: 10% Homework, exercises and reports: 30% Midterm presentation: 30% Final presentation: 30% Note: Presentations will be evaluated based on delivery, research content, organization and learning outcome.		
テキスト（書名・著者名・出版社名・価格）【Textbook(s) (Title・Author・Publisher・Price)】		
Organisation for Economic Cooperation and Development (OECD) Economic Survey of Japan 2017. ISSN: 1999-012X (online) URL: http://dx.doi.org/10.1787/eco_surveys-jpn-2017-en		
参考文献【Recommended Literature】		
Flath, David. 2014. The Japanese Economy. Oxford University Press, 3 rd Edition. (ISBN: 019870240X) Shimizu, Shigeo. 2014. Japanese-Style Management: From Crisis to Reformation in the age of Abenomics. Lid Publishing. (ISBN: 1907794409) Chang, Mark and Horiguchi, Kazuhisa. 2014. 英語で学ぶ日本の経済とビジネス An Insight into the Japanese Economy. Sanshusha Company. (ISBN: 4384334427)		
受講上の注意・担当者からのひとこと【Important Considerations/Notes from Instructor】		
1. This course is entirely in English. English language proficiency is a course prerequisite. Students whose first language is not English (and/or whose two most recent years of full-time education have not been in an English-language school system) need to provide proof of English proficiency in the first class to be allowed to register for the course. The recommended minimum TOEFL score for course registration is 430 on the paper-based test and 45 on the Internet-based test. For IELTS, the recommended minimum overall band score is 4 and for TOEIC, 600. 2. If you submit any homework or report late but within 24 hours of the deadline, your score will be reduced by 5 percentage points. For late submissions (two to six days after the deadline), your score will be reduced by a further 10 percentage points. If you submit an exercise or report one week or more after the deadline, you will receive a score of 0% for a 'completed' task submitted late.		

授業科目名【Class Title】	単位【Credits】	担当者【Class Instructor】	
Japanese Law & Politics・Issues in Japan today	2	Shincha Park	
サブテーマ【Sub Theme】		開講期【Semester】	曜講時【Day & Period】
		Semester 1	Monday 3
到達目標【Attainment objectives】			
This course aims to provide broad knowledge of the contemporary Japanese society focusing on political and legal aspects. We will also compare Japan with other societies.			
講義概要【Lecture Outline】			
This course explores various aspects and issues of the Japanese society, including politics, legal structure, demography, family, work, education, social movements, gender inequality, minorities and immigration in Japan today. Going beyond general explanations, we will study and discuss about various problems in the Japanese society which arose in the face of recent social changes and advancing globalization. We will also place Japan in a global context and compare it with other societies to see what are characteristics and commonalities among them.			
講義方法【Lecture Method】			
Lectures with active participation of students: discussion, small group presentation			
授業時間外における予・復習等の指示【Direction related to study out of class】			
Reading assignments			
試験方法・成績評価方法【Testing and Grading Method】			
Class participation and contribution, Mid-term essay, Final paper			
テキスト（書名・著者名・出版社名・価格）【Textbook(s) (Title・Author・Publisher・Price)】			
Provided by the lecturer			
参考文献【Recommended Literature】			
V.L. Bestor, et.al. eds. <i>Routledge Handbook of Japanese Culture and Society</i> Y. Sugimoto, <i>An introduction to Japanese Society</i> (3 rd ed.)			
受講上の注意・担当者からのひとこと【Important Considerations/Notes from Instructor】			
Details of course materials and evaluation will be available in the first meeting.			

Omiya Campus

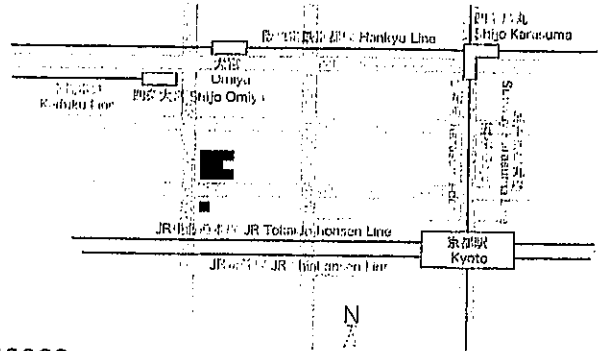
1. 本館 (重要文化財) / Central Hall (Important Cultural Property)
2. 北館 (重要文化財) / North Hall (Important Cultural Property)
3. 南館 (重要文化財) / South Hall (Important Cultural Property)
4. 旧守衛所 (重要文化財) / Former guard station (Important Cultural Property)
5. 正門 (重要文化財) / Main Gate (Important Cultural Property)
6. 西館 / West Hall

7. 西翼別館 / West Hall Annex
8. 守衛所 / Guard station
9. 清和館 / Seiwakkan
10. 東翼 / East Hall
11. 図書館 / Library
12. 清風館 / Shofukan
13. 白亜館 / Hakuakan



大宮キャンパス

- 文学部 (3・4年) Faculty of Letters (Juniors and Seniors)
- 大学院 (文学研究科・実践宗教学研究院) Graduate Schools (Letters/Practical Shin Buddhist Studies 2009-)
 - 文学部 (3・4年) Faculty of Letters (Juniors and Seniors)
 - 大学院 (文学研究科・実践宗教学研究院) Graduate Schools (Letters/Practical Shin Buddhist Studies 2009-)



Access

- JR「京都」駅から徒歩約10分 (市バス約3分)
Approximately 10 minutes walk from JR Kyoto Station (Approximately 3 minutes by bus)
- 阪急「四条大宮」駅から市バス約5分「七条大宮」下車
Approximately 5 minutes by bus from Keihan Shijo-Omiya Station Stop at Shichijo-Omiya Station
- 京阪「七条」駅から徒歩約20分
Approximately 20 minutes walk from Keihan Shichijo Station

※車での来校は、ご遠慮くださいますようお願いいたします。
As parking is limited, please use public transport

〒600-8268 京都市下京区七条通大宮東入大工町125-1
125-1 Daiku-cho, Shichijo-dori, Omiya Higashi-iru,
Shimogyo-ku, Kyoto 600-8268
Tel. 075-343-3311

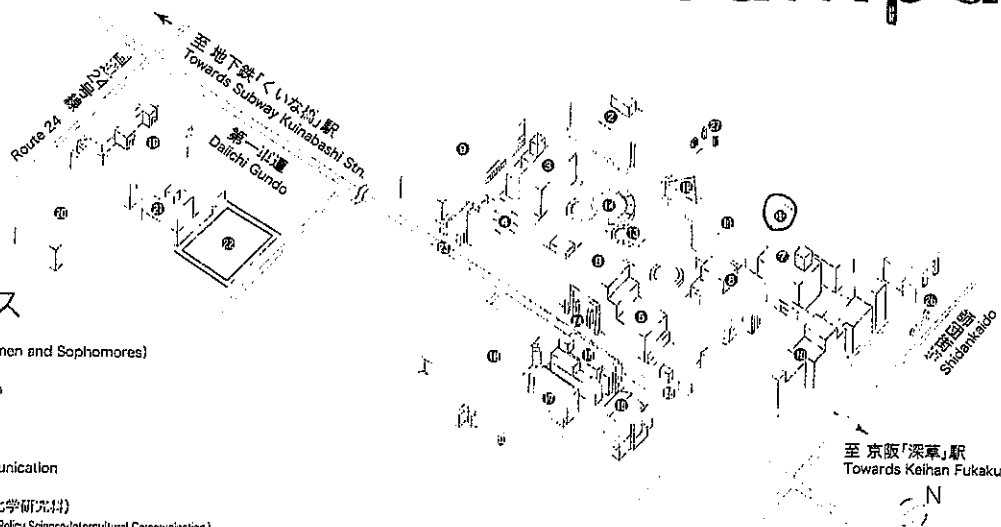
Access

- 京阪「深草」駅から徒歩約3分
Approximately 3 minutes walk from Keihan Fukakusa Station
- 地下鉄「くいな橋」駅から徒歩約7分
Approximately 7 minutes walk from Kuinabashi Subway Station
- JR奈良線「福原」駅から徒歩約8分
Approximately 8 minutes walk from JR Inari Station (Nara Line)

※紫光館・至心館へは地下鉄「くいな橋」から徒歩約5分
It takes approximately 5 minutes walk from Kuinabashi Subway Station to Shikokan and Shishinkan

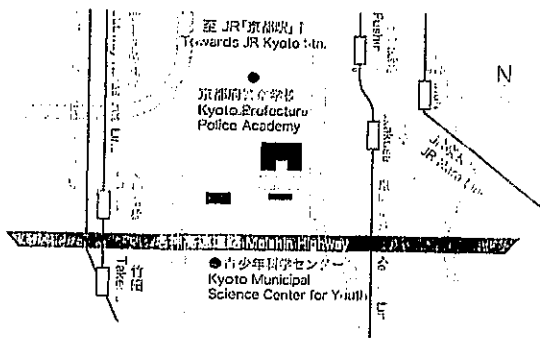
※車での来校は、ご遠慮くださいますようお願いいたします。
As parking is limited, please use public transport.

Fukakusa Campus



深草キャンパス

- 文学部 (1・2年生) Faculty of Letters (Freshmen and Sophomores)
- 経済学部 Faculty of Economics
- 経営学部 Faculty of Business Administration
- 法学部 Faculty of Law
- 政治学部 Faculty of Policy Science
- 国際学部 Faculty of International Studies/
- 国際文化学部 Faculty of Intercultural Communication
- 短期大学部 Junior College
- 大学院 (法学・経済学・経営学・政策学・国際文化学研究科) Graduate Schools (Law/Economics/Business Administration/Policy Science/Intercultural Communication)
- 法科大学院 Law School

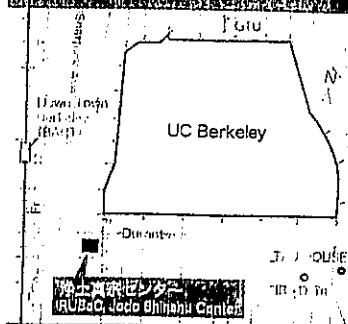


- ① 和魂館 / Wagenkan
2. 2号館 / Building 2
3. 3号館 / Building 3
4. 4号館 / Building 4
5. 5号館 / Building 5
6. 7号館 / Building 7
7. 8号館 / Building 8
8. 21号館 / Building 21
9. 22号館 / Building 22

10. 紫雲館 / Shieikan
11. 図書館 / Library
12. 顕真館 / Kenshinkan
13. カフェ・樹林 / Cafe "Jurin"
14. ステージ / Stage
15. 学友会館 / Gakuyu Kaikan
16. 紫朋館 / Shihokan
17. 紫陽館 / Shiyokan
18. 体育館 / Gymnasium
19. 紫光館 / Shikokan
20. 紫光館別館 / Shikokan Annex
21. 至心館 / Shishinkan
22. テニスコート / Tennis court
23. 西門 / West Gate
24. 正門 / Main Gate
25. 通門 / Side Gate
26. 東門 / East Gate
27. 北門 / North Gate

〒612-8577 京都市伏見区深草塚本町67
67 Tsukamoto-cho, Fukakusa,
Fushimi-ku, Kyoto 612-8577
Tel. 075-642-1111

海外拠点 Overseas Center



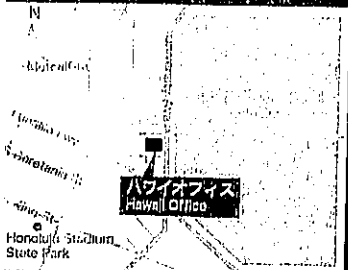
龍谷大学 バークレーセンター「ルーベック」

Ryukoku University Berkeley Center, RUBC
2140 Durant Avenue, Berkeley, CA 94704 U.S.A.

- 教育・研究拠点
Base for education and research activities
- 留学支援
Provides study abroad support
- 海外広報
Provides overseas publicity for Ryukoku University

【お問い合わせ/Contact】

国際部(京珠キャンパス・紫雲館1階)
Ryukoku International Center (Fukukusa Campus)
Tel. +81-(0)75-645-7898 Fax. +81-(0)75-645-2020
E-mail: rlc@ad.ryukoku.ac.jp



龍谷大学 ハワイオフィス

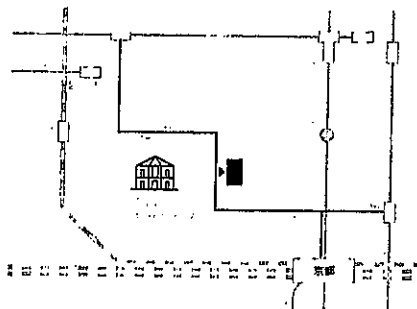
Ryukoku University Hawaii Office
1436 University Ave. Honolulu, HI 96822

【お問い合わせ/Contact】

国際部(京珠キャンパス・紫雲館1階)
Ryukoku International Center (Fukukusa Campus)
Tel. +81-(0)75-645-7898 Fax. +81-(0)75-645-2020
E-mail: rlc@ad.ryukoku.ac.jp

龍谷ミュージアム

Ryukoku Museum



【お問い合わせ/Contact】

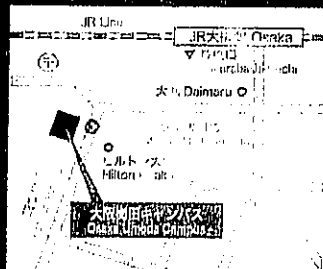
〒600-8399 京都市下京区堀川・正国下る(西本・寺前)
117 Horikawaderi Shomen Sagaru Shimogyo-ku, Kyoto
Tel. 075-351-2500 Fax. 075-351-2577

【開館時間/Museum Hours】

10:00~17:00 *Last admission is 16:30
毎、月、日休館 Museum closed on every Monday
※祝日は(翌日は閉館) その他ミュージアムの定める日
*Open when Monday is a holiday (closed the following day)
Other days as set by the museum

東京・大阪拠点 Tokyo & Osaka Offices

- 在学生のキャリア・就職支援
Assistance in career/employment opportunities for current students
- 卒業生のキャリア・就職支援 (大阪梅田キャンパスのみ)
Assistance in career/employment opportunities for former students
- 在学生・卒業生への交流の場の提供
Providing a place for meeting current and former students
- 受験生への大学案内
Assistance and advice for prospective students
- 産官学連携事業の推進
Promotion of industry-government-academic collaborative ventures



龍谷大学 大阪梅田キャンパス

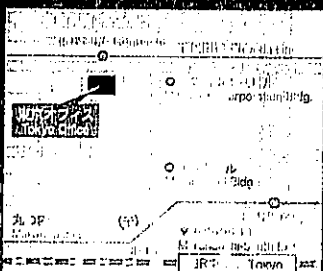
Ryukoku University Osaka Umeda Campus

【お問い合わせ/Contact】

〒530-0001 大阪市北区梅田2-2-2
ヒルトンプラザウエストオフィスタワー14階
Hilton Plaza West Office Tower, 14F, 2-2-2,
Umeda, Kita-ku, Osaka 530-0001
Tel. 06-6344-0218 Fax. 06-6344-0261

【開室時間/Office hours】

月~金(Monday~Friday) 10:00~18:30



龍谷大学 東京オフィス

Ryukoku University Tokyo Office

【お問い合わせ/Contact】

〒100-0005 東京都千代田区丸の内二丁目2番1号
岸本ビルディング内
Kishimoto Bldg. 2-1, 2cho-me,
Marunouchi, Chiyoda-ku, Tokyo 100-0005
Tel. 03-3201-2751 Fax. 03-3201-2778

【開室時間/Office hours】

月~金(Monday~Friday) 8:45~17:15

国際部の公開URLはこちらをクリック
Online Japan Campus for International Center
Ryukoku International Center
(Ryukoku) / (Ryukoku)
(Ryukoku) / (Ryukoku)
Ryukoku International Center
(Ryukoku) / (Ryukoku)
Tel. 075-645-7898



龍谷大学

RYUKOKU UNIVERSITY

グローバル教育推進センター

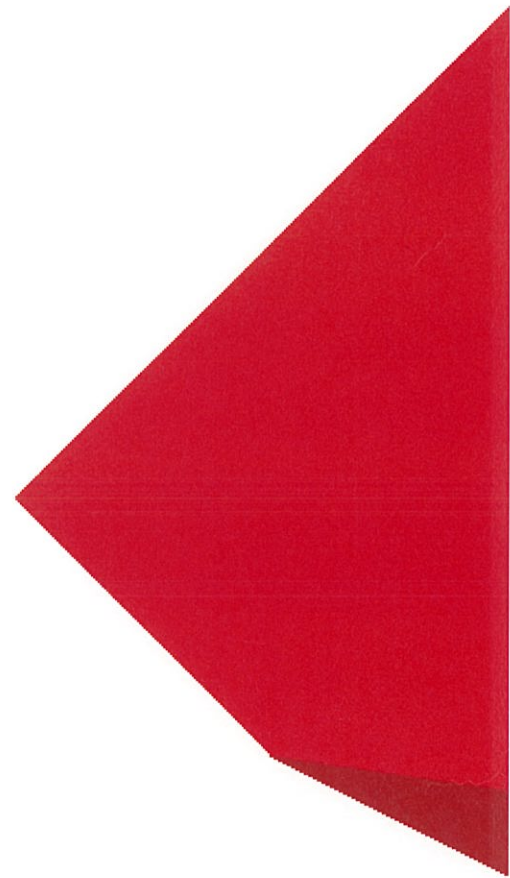
International Programs Coordinator Center for the Promotion of Global Education (R-Globe) Office

〒612-8577 京都市伏見区深草塚本町67

TEL : +81-(0) 75-645-7898 FAX : +81-(0) 75-645-2020

E-MAIL : r-globe@ad.ryukoku.ac.jp

HP : http://www.ryukoku.ac.jp



Japanese Experience Program in Kyoto